

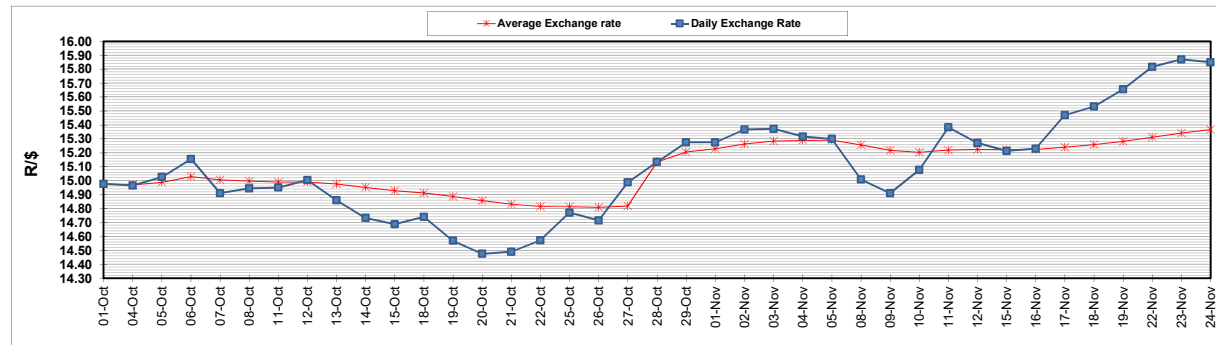
	PETROL 95 ULP	PETROL 93 ULP & LRP	DIESEL 0.05%	DIESEL 0.005%	ILL. PAR.
GAUTENG PUMP PRICE (SA c/l) AS FROM 03/11/2021	1,954.000	1,932.000	-	-	-
WHOLESALE PRICE (SA c/l) AS FROM 03/11/2021	-	-	1,719.980	1,723.380	1,125.488
SINGLE NATIONAL MAXIMUM RETAIL PRICE	-	-	-	-	1,433.000
BASIC FUEL PRICE - 24/11/2021 (SA c/l)	951.797	935.803	944.514	951.145	937.209
PRESS RELEASE CONTRIBUTION TO BFP 03/11/2021 - 24/11/2021 (SA c/l)	937.110	925.110	917.630	921.030	912.128
UNIT OVER/(UNDER) RECOVERY - 24/11/2021 (SA c/l)	(14.687)	(10.693)	(26.884)	(30.115)	(25.081)
AVERAGE BASIC FUEL PRICE 28/10/2021 - 24/11/2021	951.804	933.292	926.677	932.549	917.702
AVERAGE UNIT OVER/(UNDER) RECOVERY 28/10/2021 - 24/11/2021	(38.454)	(31.943)	(38.247)	(40.718)	(34.574)

ANALYSIS MOVEMENT OF AVERAGE OVER/(UNDER) RECOVERY

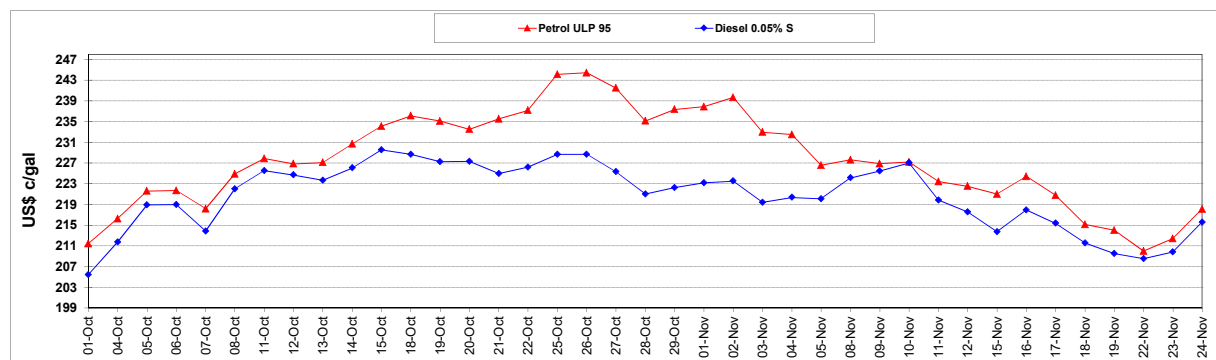
	PETROL 95	PETROL 93	DIESEL 0.05%	DIESEL 0.005%	ILL. PAR.
- MOVEMENT IN INTERNATIONAL PRODUCT PRICES	(4.461)	1.390	(5.151)	(7.413)	(1.799)
- MOVEMENT IN EXCHANGE RATE	(33.993)	(33.332)	(33.096)	(33.306)	(32.775)
AVERAGE UNIT OVER/(UNDER) RECOVERY 28/10/2021 - 24/11/2021	(38.454)	(31.943)	(38.247)	(40.718)	(34.574)

R/\$ EXCHANGE RATE - (R/\$15.8498 - 24/11/2021)

EXCHANGE RATE USED IN BASIC FUEL PRICE



INTERNATIONAL PRODUCT PRICES OF BASKET USED IN BASIC FUEL PRICE



BASIC FUEL PRICE IN SA CENTS PER LITRE

